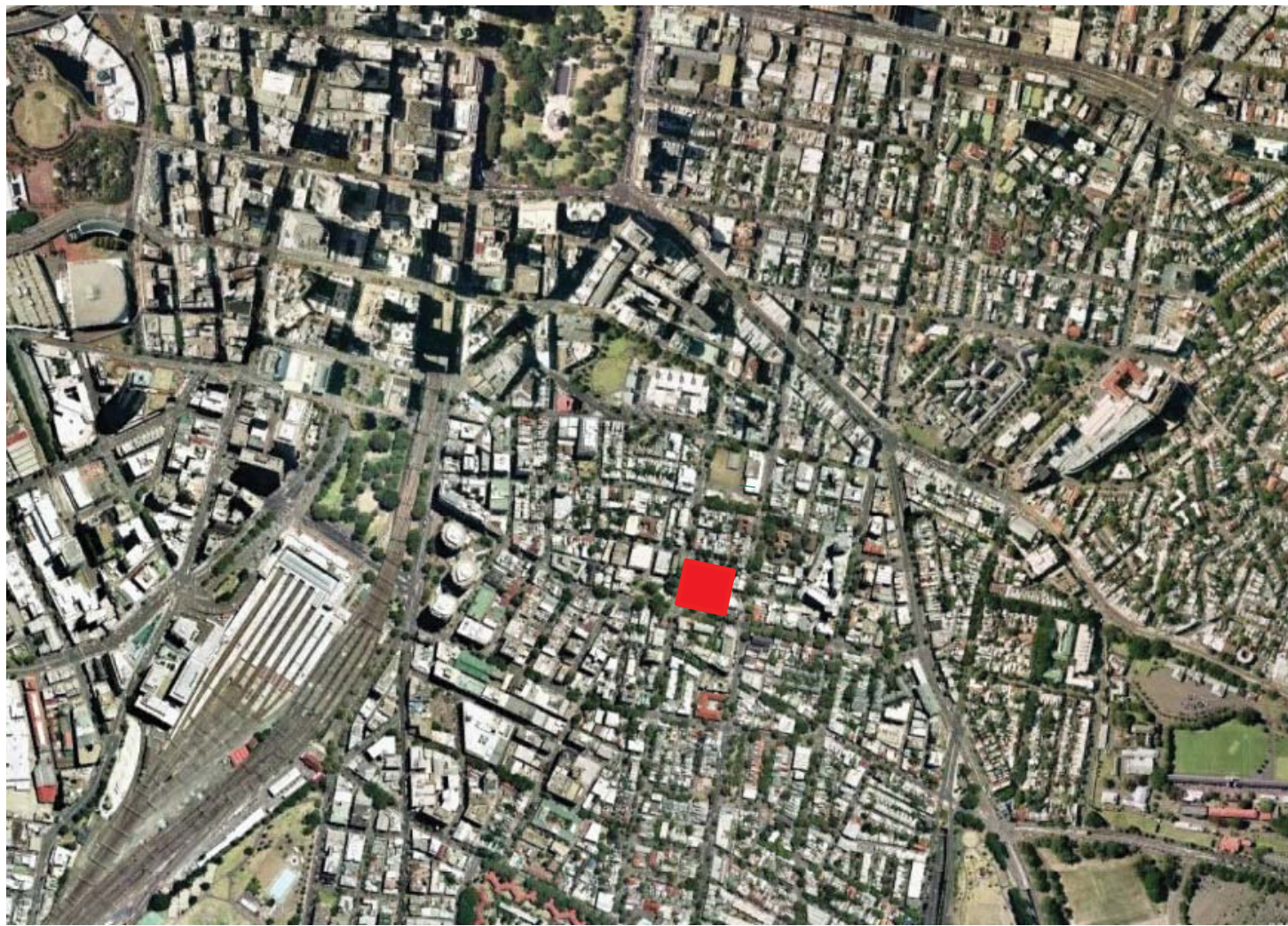


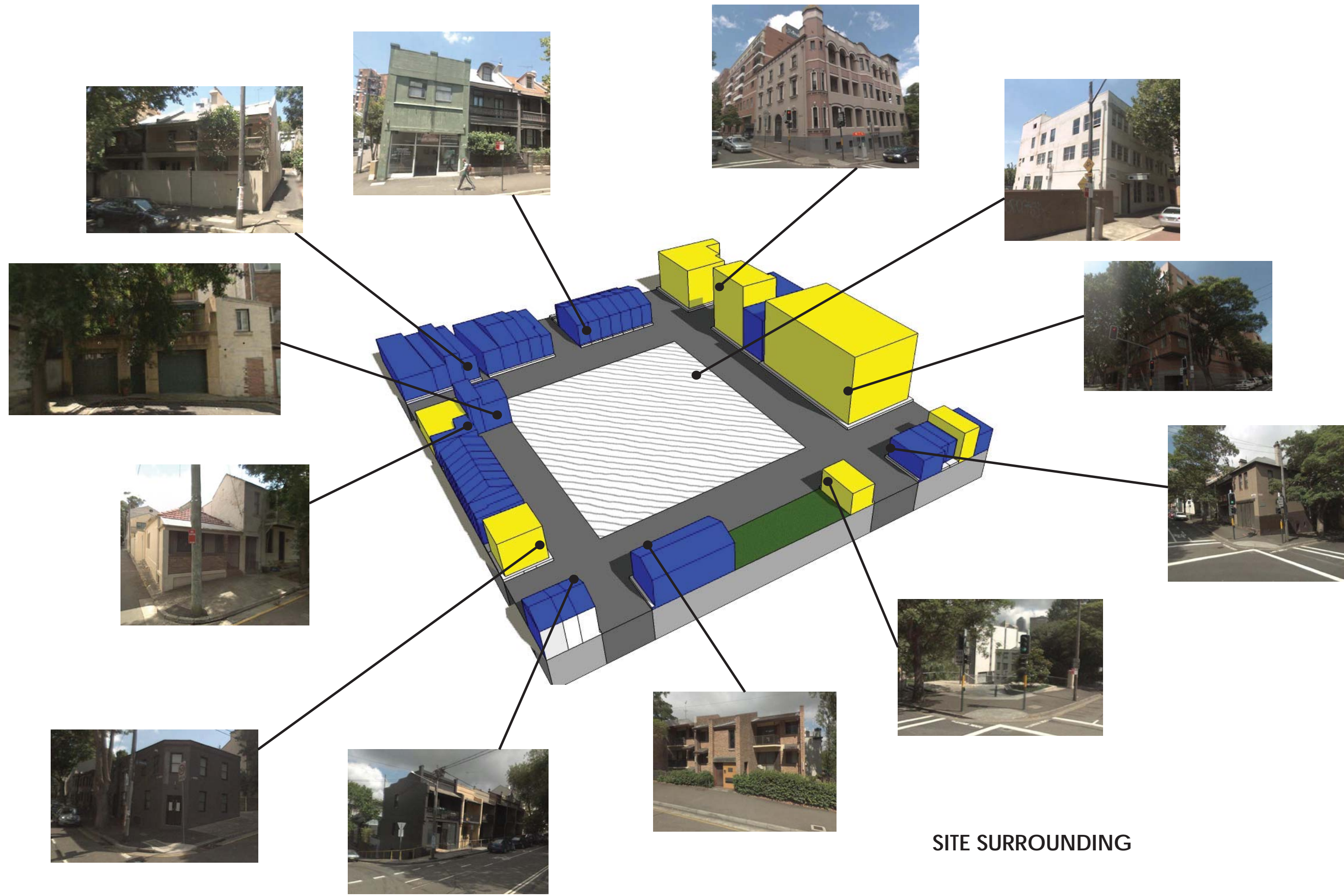
# SITE ANALYSIS.....



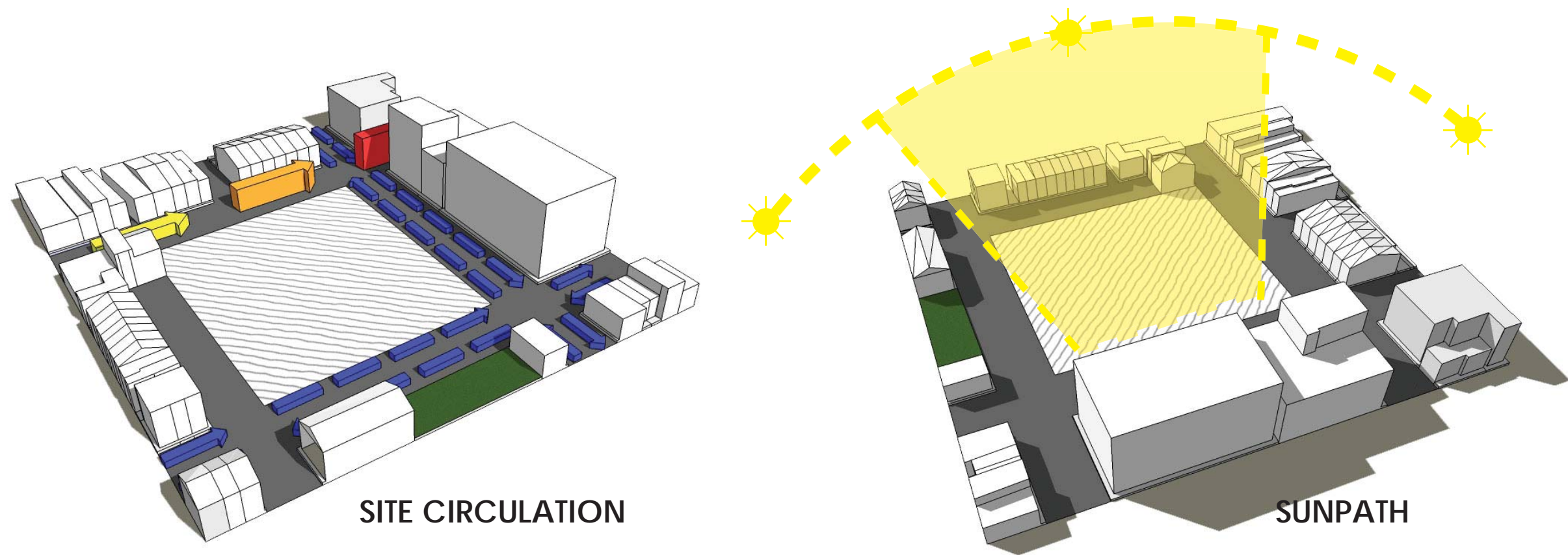
SITE LOCATION



SITE

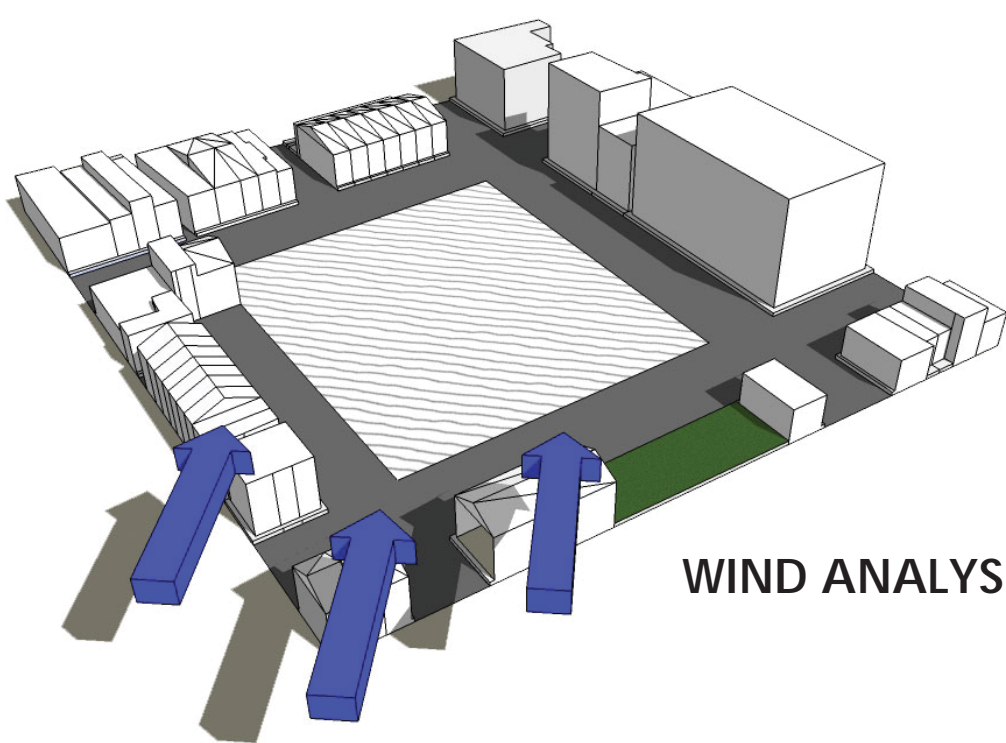


SITE SURROUNDING

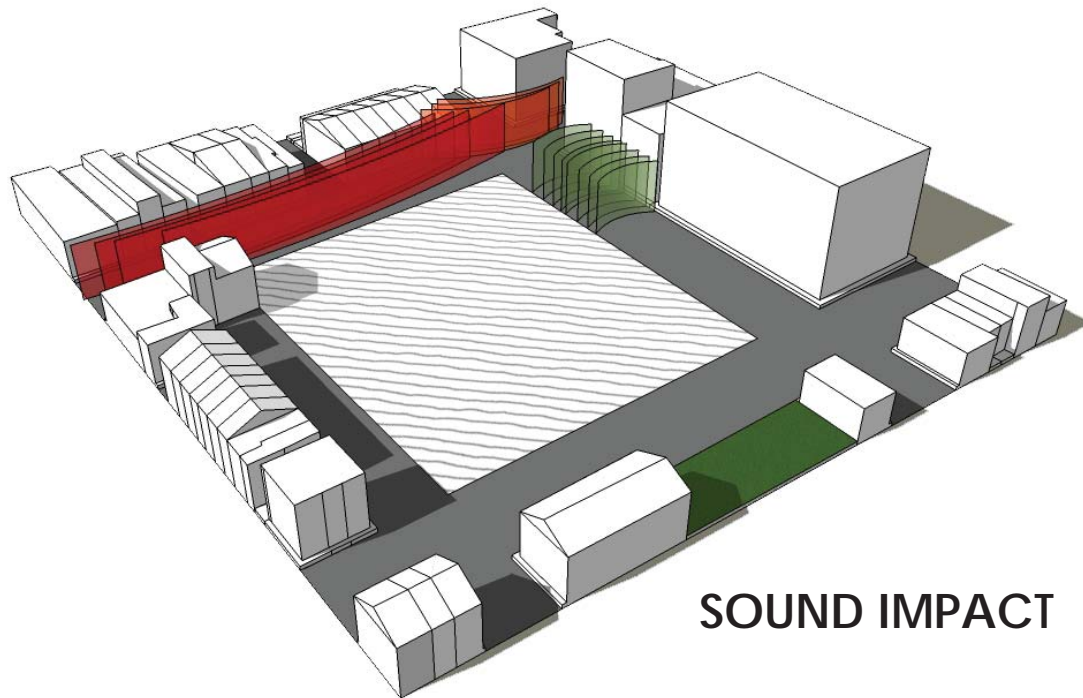


SITE CIRCULATION

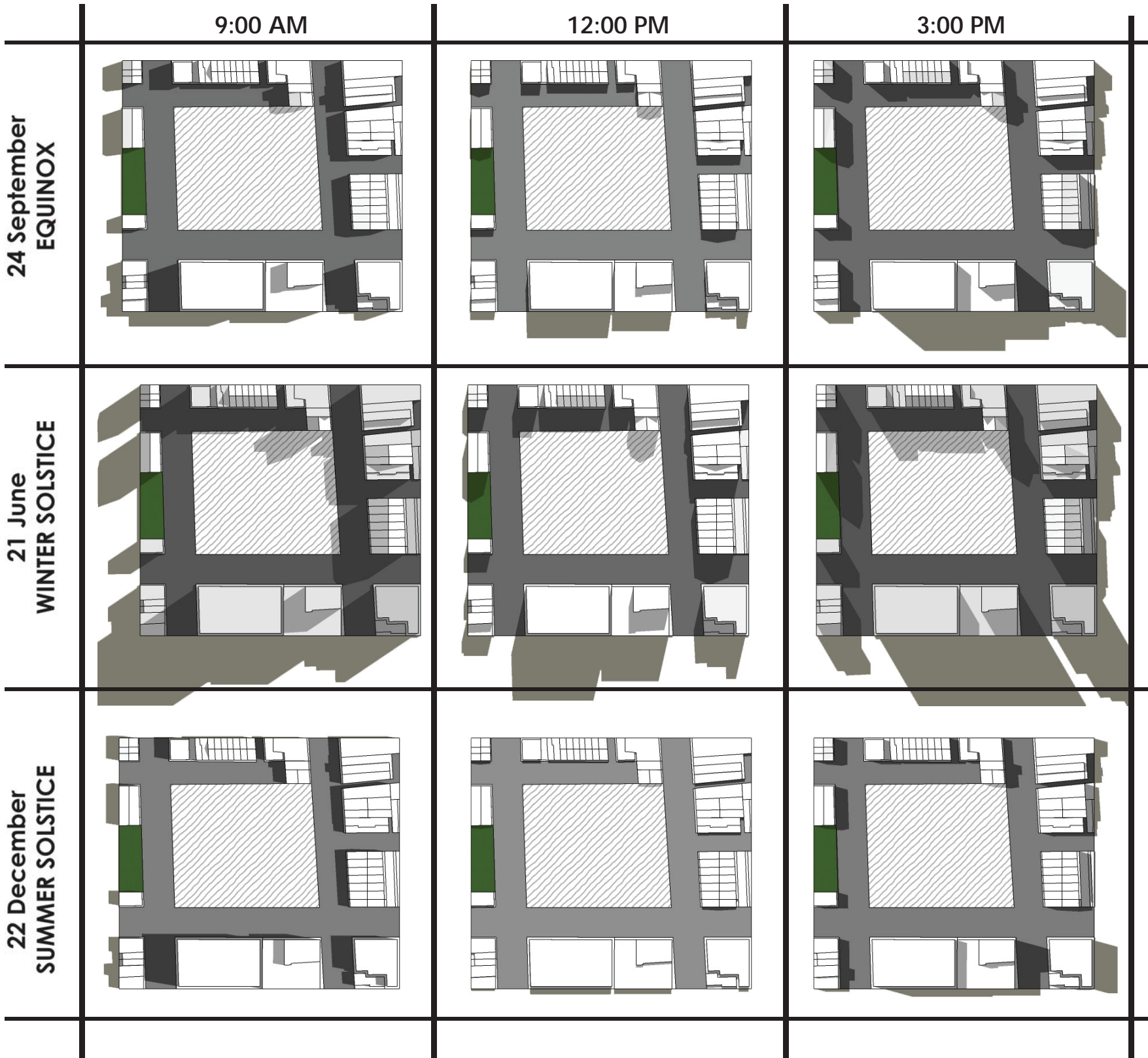
SUNPATH



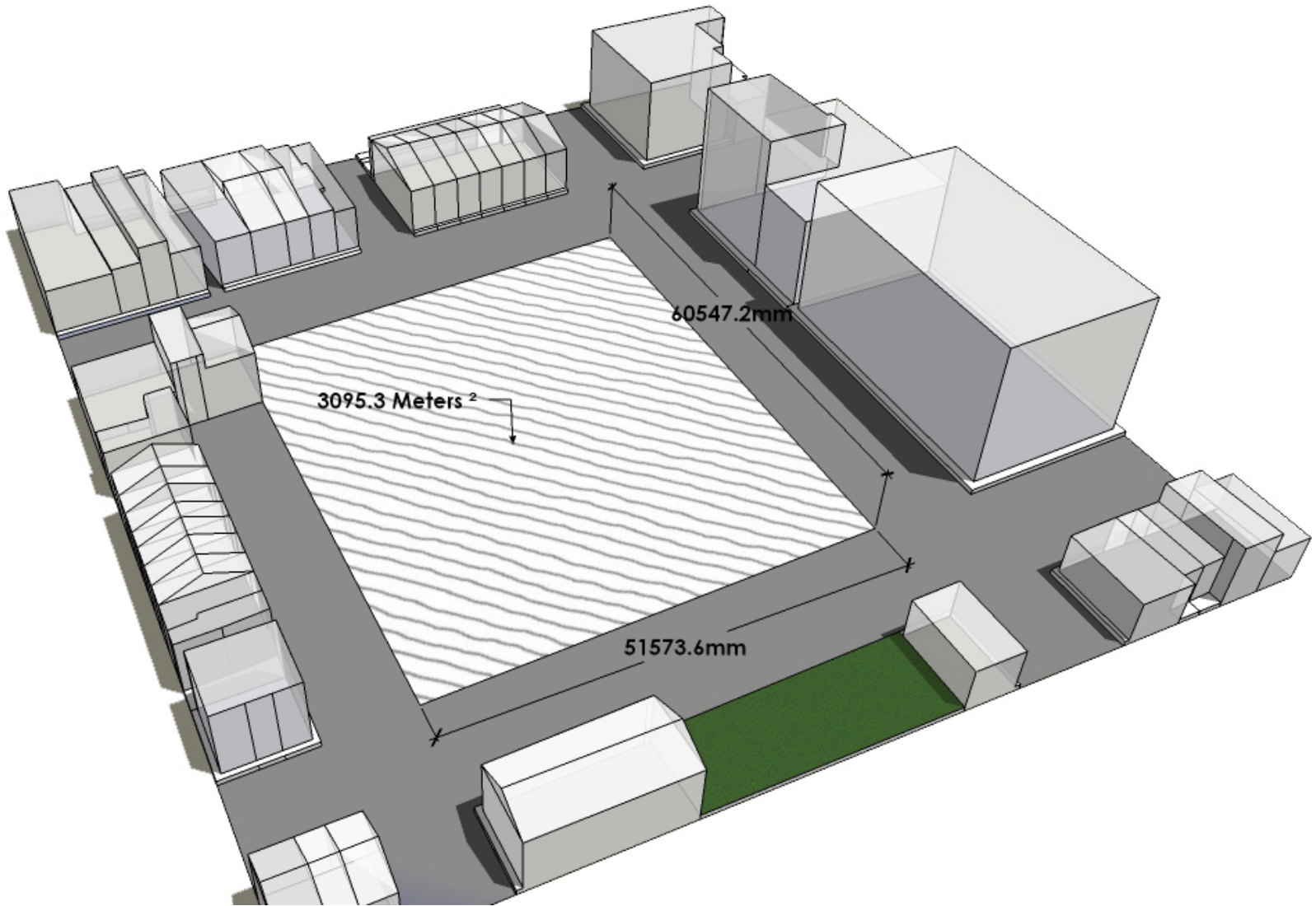
WIND ANALYSIS



SOUND IMPACT



SOLAR ANALYSIS



SITE DIMENSIONS

## Surry Hills

Surry Hills is one of those Sydney suburbs that has seen its stocks go up and down: it has been praised for its 'healthy breezes and beautiful views', but at other times damned as a squalid slum breeding crime and immorality. It has been home to colonial bluebloods in opulent villas and townhouses, but it has also sheltered the poor in dark basements and attics of appalling meanness. And for the Cadigal people, the original inhabitants of the land, the coming of the white men was an unmitigated disaster.

## Urban Character

Surry Hills has a mixture of residential, commercial and light industrial areas. It remains Sydney's main center for fashion wholesale activities, particularly on the western side. Crown Street is the heart of the Surry Hills community, featuring a mix of cafes, restaurants, fashion and home wares stores. The Surry Hills Shopping Village (formerly Redfern Shopping Village) is a shopping center on Cleveland Street, on the border with Redfern. Oxford Square is a shopping center on Oxford Street, on the border with Darlinghurst. Surry Hills Markets are held in Shannon Reserve at the corner of Crown and Collins Streets, on the first Saturday of every month, and the Surry Hills Festival is an annual community event, attracting tens of thousands of visitors, held in Prince Alfred Park. The Surry Hills Library and Community Centre sits opposite Shannon Reserve and houses the local branch of the city library and the Surry Hills Neighborhood Centre. The building was "designed to achieve excellence in sustainable design and set new benchmarks in environmental performance" according to the City of Sydney website.

Surry Hills history mirrors the history of Sydney city. Soon after the First Fleet's 1788 arrival at Sydney Cove, wealthy settlers spread into the fringe areas but within a few decades the wealthy were moving further out of town and the working class was taking over Surry Hills. By the turn of the century, Surry Hills had become very overcrowded because of this shift in the population. Migrants from many nationalities and cultures crammed into the narrow streets and lanes creating pockets of high density population that only multi-storey and high-rise development can now match nowadays. Surry Hills history has always been very colorful over the years due to its popularity and close proximity to Sydney city and was subject to a major redevelopment early last century. When walking past the rows of Victorian terraces today, it is hard to image that 19th and early 20th century Surry Hills was indeed even more crowded. The legacy of the continuing redevelopment is a tantalizing mix of commercial and residential architecture reflecting the eras and trends.

